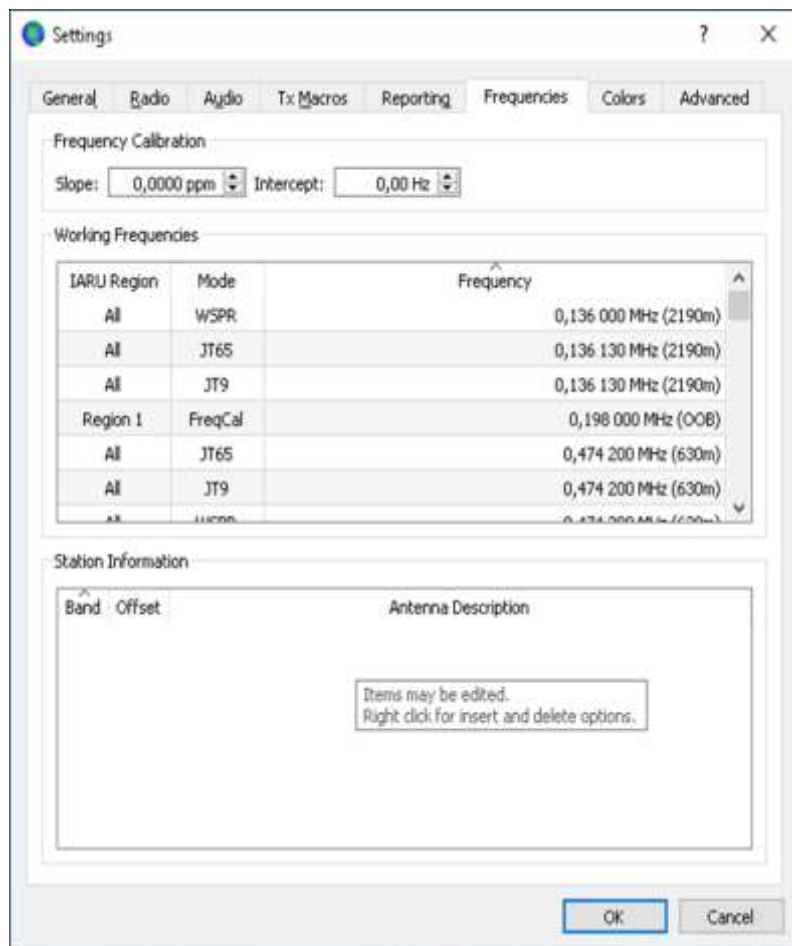




WSJT-X SETUP for N1MM+

During the PACCdigi contest we will use different frequencies for FT8 mode. It is convenient to put these frequencies in the frequency list, to prevent WSJT-X to hop back to the default F8 frequencies on the band.

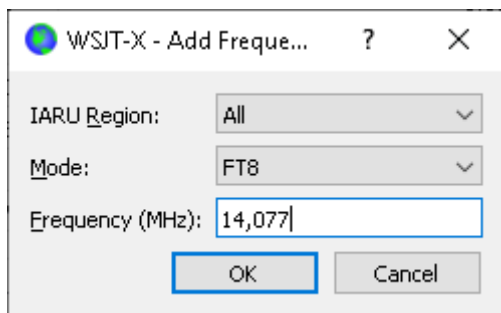
The frequency table can be found in Settings under tab “Frequencies”. This list contains the default frequencies for all modes within WSJT-X, including FT8.





The contest frequencies can be added freely by double clicking on the frequency table. In the window that appears one can set the frequency in MHz like below.

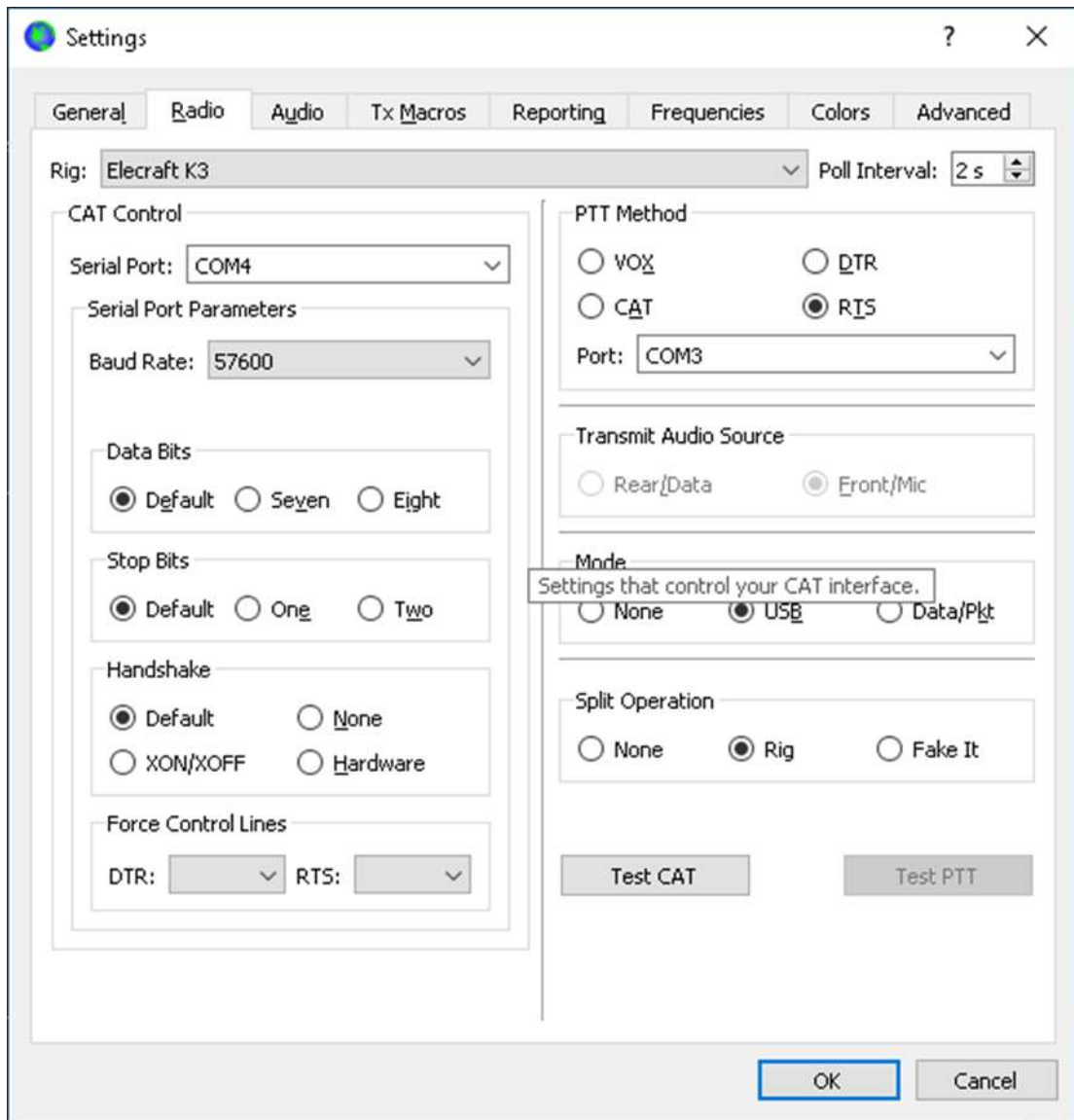
The decimal separator is most of the times the separator as defined in your PC's locale. The other settings can be made by selecting the right fields from the pulldown list.



Choose OK to add the frequency to the list.

Another setting that might be relevant in selecting the right frequency can be found under the tab Radio. “Split Operation” can be chosen as “Rig” in case of a dual VFO or “Fake it”. The software will then take care that the transmitting signals are optimized for the audio band.





To create the internal communication the UDP server settings must be set. These are under the “Reporting” tab of the WSJT_X software.





Settings

General | Radio | Audio | Tx Macros | Reporting | Frequencies | Colors | Advanced

Logging

- Prompt me to log QSO
- Log automatically (contesting only)
- Convert mode to RTTY
- dB reports to comments
- Clear DX call and grid after logging

Op Call: PE3T

Network Services

- Enable PSK Reporter Spotting

UDP Server

Important settings

- UDP Server: 127.0.0.1 Accept UDP requests
- UDP Server port number: 2237 Notify on accepted UDP request
- Accepted UDP request restores window

Secondary UDP Server (deprecated)

- Enable logged contact ADIF broadcast
- Server name or IP address: 127.0.0.1
- Server port number: 2333

OK Cancel

After these changes have been configured, one can run WSJT-X from the contest logger directly from N1MM+:





14074.00 USB Manual - VFO A Op: PA...

File Edit View Tools Config **Window** Help

RTTY PSK

160	160
80	80
40	40
20	20
15	15
10	10

Green circle, Red circle, White circle, Run, Selected radio button

F1 F2 F3

F7 Rpt F8 F9

Esc: Stop Wi Lo E

Heading appears

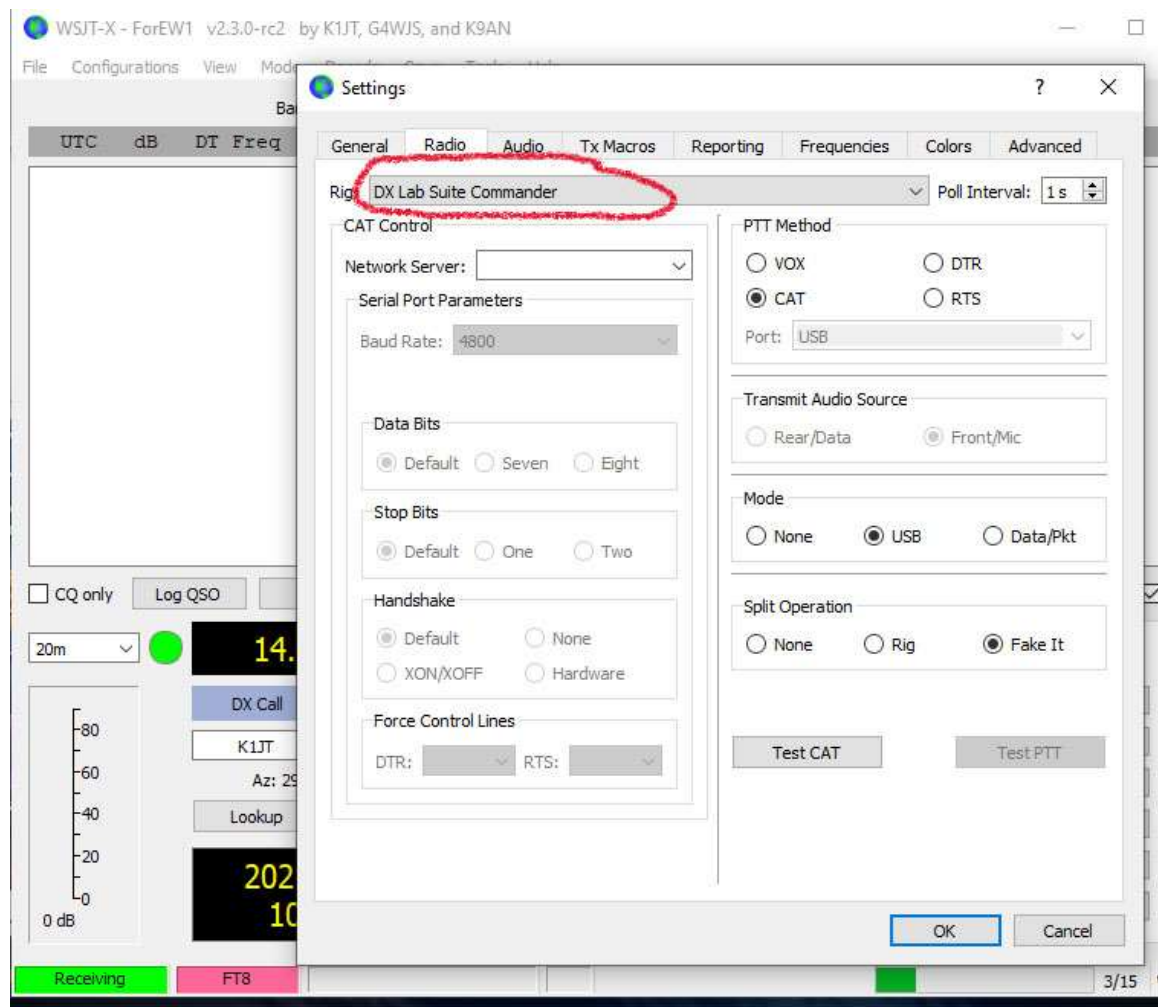
Call history Use

This database is for:

- Available Mult's & Q's
- Bandmap
- Check
- CW Key Ctrl+K
- CW Reader
- Digital Interface
- Entry Window
- Gray Line
- Info
- Log Ctrl+L
- Move Multipliers
- Multipliers
- Network Status
- Rotor Windows
- Talk to Another Station Ctrl+E
- Score Summary
- Spectrum Display
- Telnet
- Visible Dupesheet
- WSJT Decode List
- Load WSJT/JTDX**



After that, the radio must be setup as “DX Lab suite Commander”, in the settings screen under radio, because N1MM will in most cases block radio commands to the transceiver done by WSJTX.



Use WSJT-X in the normal FT8 mode of operation; not in a special contest related mode.

Working FT8 QSO will happen entirely in the WSJT-X software.

N1MM+ will only work as a logger.

In the advanced tab one needs to make sure the UDP server is enabled.

